



# AES1120

Smart Electricity Meter Single Phase Single Element

Enabling People – The aim of Smart Metering



**SMETS2 v1.59, GBCS v0.8.2 compliant**

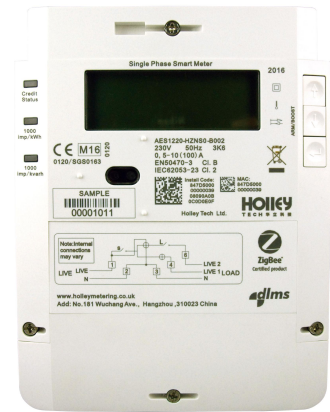
**SW/FW OTA upgradable**

**Memory headroom for future applications**

**Installer friendly**

**Designed for manufacturability & reliability**

**Modular HAN provides more flexibility**



## TECHNICAL SPECIFICATIONS

### Measurement

- 1 element
- Active / Reactive / Apparent energy
- Active / Reactive/ Apparent Power
- Import / Export
- Instantaneous current/voltage
- Active: Class B, Reactive: Class 2

### Rating

- Voltage operating range: 172.5V – 264.5V
- Current: 10A(100A)
- Ingress Protection: IP53
- Temperature operating range: -25°C to 55°C

### Tariffs

- Primary element:  
Supports TOU Block mode  
4\*8 Block register matrix, 4\*8 Block price matrix
- Secondary element:  
Support up to 4 tariffs
- Two elements operate independently

### Security

- AES-128/ECC data encryption
- CPA SC followed
- SMKI implemented
- Tamper detection

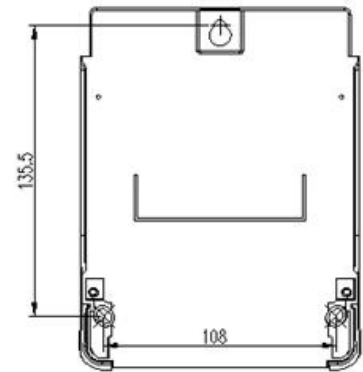
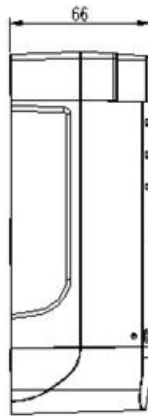
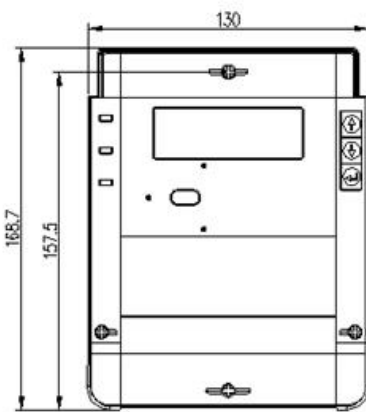
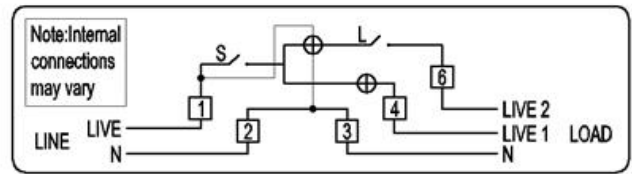
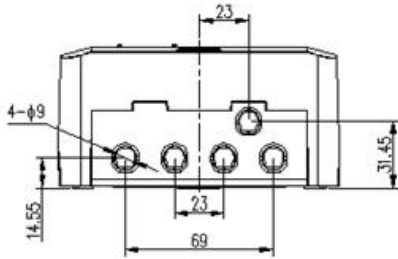
### Communications

- GBCS baseline specification
- DLMS/COSEM compliant
- HAN: ZigBee SEP1.2 (<10mW)  
Field replaceable HAN module supports different technologies for local connectivity

### Consumer Interface

- 160\*50 Dot Matrix LCD display
- Backlight configurable
- Beeper indication
- User-friendly operation

## Dimensions & Wiring diagram



### Profiling

- Half-hourly: consumption data for last 13 months, export data (kWh) and reactive energy import/export (kvarh) of last 3 months
- Daily: consumption data (kWh) for last 2 years
- Current tariff information

### Physical Dimension

- H \* W \* D:  
168.7mm\*130mm\*66mm
- Net Weight: 1.0kg

### Relay

- Two build-in 100A contactors
- Remote/Local/Time-based action
- ARM / Boost support
- Smart and friendly load control



**Holley Technology Ltd**  
**No.181 Wuchang Avenue**  
**Yuhang District Hangzhou China**  
**Tel: +86-571-89300881**  
**Email: [overseas@holley.cn](mailto:overseas@holley.cn)**  
**Website: [www.holleytech.cn](http://www.holleytech.cn)**

**Holley Technology UK Limited**  
**200 Brook Drive, Green Park, Reading, United Kingdom**  
**RG2 6UB**  
**Tel: +44(0)1189497200**  
**Email: [info@holleytech.uk](mailto:info@holleytech.uk)**  
**Website: [www.holleytech.uk](http://www.holleytech.uk)**